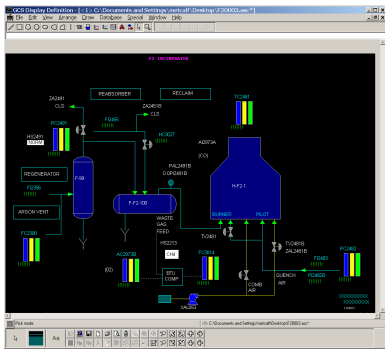


WebPFD™

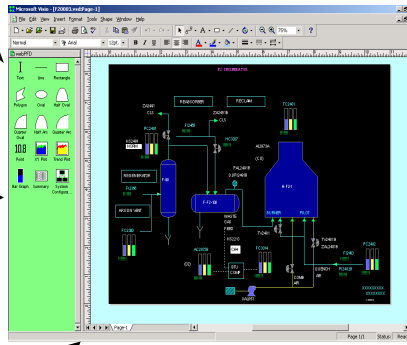
High-productivity environment for creating and managing process displays and reports based on the Web.21™ tools.



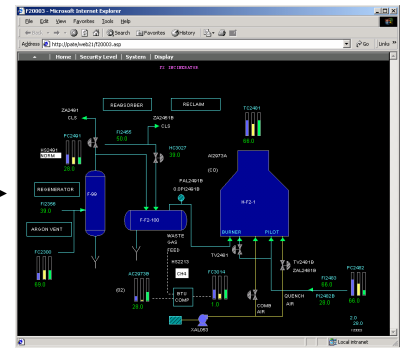
Users & Administrators



GCS™ and Process Explorer™ Displays



**WebPFD™ Displays
(based on MS Visio™ technology)**



Web.21™ Displays



**Honeywell TDC3000™
Displays**

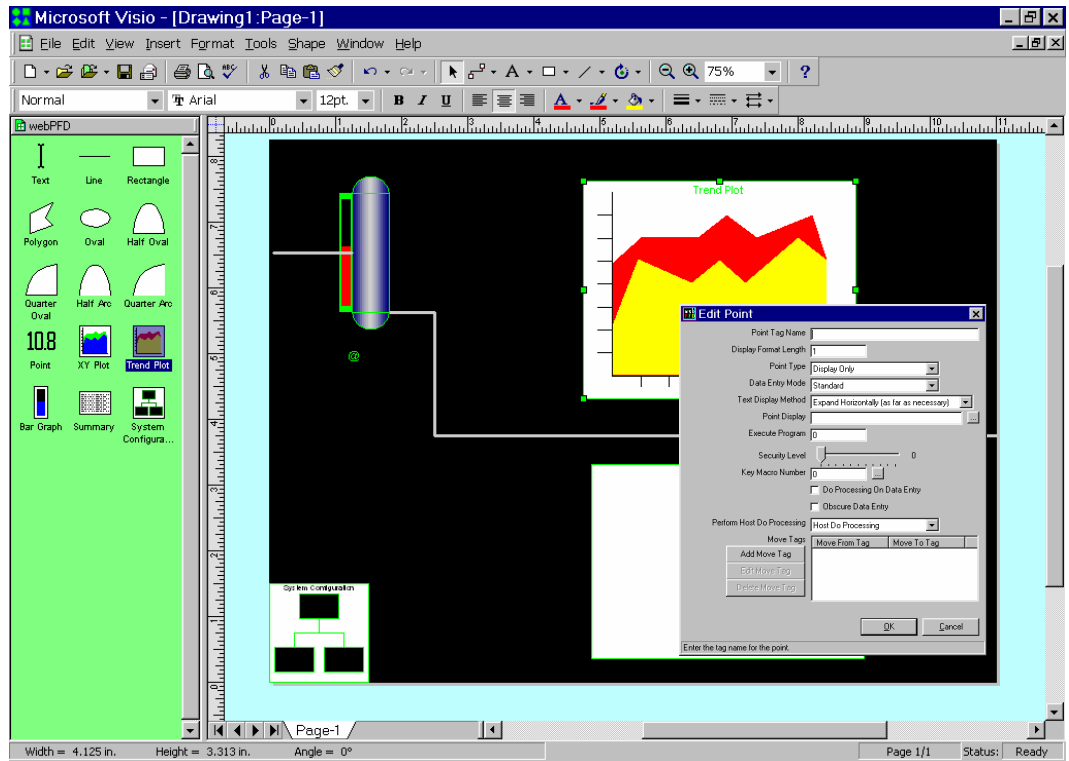
**Migration support for other
DCS, PLC, HMI displays
under development.**



**Systems Integration
for the Process and
Manufacturing Industries**

“WebPFD™, in conjunction with Aspen Technology database products, allows you to rapidly design and implement custom web browser interfaces to your plant and process data. By supporting migration of legacy displays and through extreme ease-of-use, WebPFD™ maximizes the value of the Aspen Technology Web.21™ offering.”

WebPFD™ transforms the creation of Web.21™ pages, whether they are process displays or tabular reports, from a programming task into a drag, drop and move exercise. Most importantly, it protects the investment you have in legacy displays and their associated applications.



Employing WebPFD™ and Web.21™ enables your organization to quickly transition from legacy displays to a web-based user interface with no need for retraining.



Both the Import Wizard and the Export Wizard let you fine tune the conversion process to make sure your Web.21™ displays look great – improving your end user’s satisfaction with the graphic display migration process.

WebPFD™ MAIN FEATURES

- Supports display conversion from the following systems:
 - GCS™ displays
 - Process Explorer™ graphics
 - Honeywell TDC3000™ displays
- Microsoft Visio™ editing environment and the WebPFD™ application provide extended functionality such as:
 - Sophisticated display dynamics with NO programming
 - Sub-group attribute editing (without having to undo grouping)
 - Easy identification of all objects within the graphic that have attribute changes defined
 - Context sensitive object parameters (tag, attribute change data, etc.) accessed by double-clicking
 - Smart connectors between graphic objects means modifying graphics takes much less time
- Provides support for Rapid Application Development (utilizing existing GCS™ link handler and task console records tied to custom task console programs on the InfoPlus.21™, InfoPlus-X™, or Setcim™ server)
- Integrates seamlessly into Web.21™ environment
- Manages navigation between displays and context sensitive menus
- Quickly define detail displays to activate when a point is “clicked”
- Supports custom color palettes and custom font files to ensure your displays look just the way you want
- Simultaneously publishes multiple displays from Visio™ format to Web.21™ environment using the export wizard



System Requirements

- *Microsoft Visio™ 2000 SR-1*
- *Web.21™ 4.0 or later*
- *Internet Explorer™ 5.5 or later*
- *Any Web.21™-compliant Aspen Technology database*

*We deliver exceptional value to our clients by
combining state-of-the-art technology with outstanding people*

SYSTEMS INTEGRATION EXPERTISE

- Process Information Systems
- Real-time Databases
- Relational Databases
- Applications Development
- User Interfaces / GUI
- Data Flow Optimization

APPLICATIONS EXPERTISE

- SPC / Six Sigma
- Batch Tracking / Management
- Production Accounting
- Laboratory Systems
- Blending
- Control & Optimization

PROJECT ACTIVITIES

- Plant I/T Strategic Planning
- Project Management
- Staffing / Execution
- Training
- Technical Support
- Benefits and Risk Audits

INDUSTRY EXPERIENCE

- Refining
- Petrochemical
- Oil & Gas
- Manufacturing
- Glass
- Textiles

OTHER ELLIPSYS PRODUCTS

E!Assist™

- InfoPlus.21™ System Health Monitoring and Alarming

E!PlantBalance

- Real-time, On-line Material Balance

E!QT

- InfoPlus.21 Excel Query Tool

E!LIMS

- Automated data retrieval from LIMS or other external data stores

E!Redundancy

- InfoPlus.21 and CIM-IO redundancy

E!Loader

- InfoPlus.21 Database Population Environment



Ellipsys, Inc.

Mailing Address:
P.O. Box 2687, Bellaire, TX 77402

Address:
6750 West Loop South, Suite 840
Bellaire, TX 77401
713-852-9595
fax: 713-667-9010

email: info@ellipsys.com
web: <http://www.ellipsys.com>

*Founded in 1995, Ellipsys is a full-service premier
systems integrator for the complete Aspen
Technology product-line...*