





Systems Integration for the Process and Manufacturing Industries

Ellipsys, Inc. is a systems integration and engineering consulting firm serving the needs of the process and manufacturing industries. In business since 1995, Ellipsys, Inc. specializes in the AspenTech Manufacturing Suite. Ellipsys offers a wide range of services including systems integration, system migrations, application development, consulting, project management, training, and systems and application support. Ellipsys provides these services worldwide.

Systems Integration

Ellipsys engineers and computer scientists have the experience and knowledge to integrate your facilities operations using open systems standards and techniques. We have specific and extensive experience integrating process, laboratory, accounting, production management, and legacy data to new hardware and software platforms. Ellipsys handles projects of all sizes and has built a reputation on responsiveness and flexibility, tailoring our services and methodologies to fit into your company's existing structure.

Systems Migration

Ellipsys engineers have experience with the most important kind of system migrations--yours. No matter what the hardware platform, operating systems or back-end database, Ellipsys has the required expertise to migrate your systems.

Ellipsys has extensive experience with the AspenTech product line, having performed migrations with all of the AspenTech database products including SETCON, InfoPlus, Setcim, InfoPlus-X and CIM/21. In moving these to one of the other products or to InfoPlus.21, Ellipsys covers all aspects of the migration including large amounts of historical data, graphics (GCS), custom calculations and programs, interfaces and reports.

Applications Development

Ellipsys increases the value of existing information systems through custom applications. Software written by Ellipsys is in use worldwide. We also offer a suite of ready-to-use products that can minimize the amount of custom development on your project, while at the same time maximizing efficiency, productivity, and communication.

Increase The Value Of Your Systems And The Productivity Of Your Staff

Investing in state-of-the-art systems provides the first level of identifiable benefits for your site. But integrating those systems, making them function as a cohesive and responsive whole, unlocks the real value of automation. Furthermore, tailoring the systems and data in a way that fits your custom business processes provides an even greater competitive advantage for your corporation.

Consulting and Project Management

Ellipsys has an extremely well balanced group of engineers, computer scientists, and business specialists with strong backgrounds in information systems, software development, interfaces, networking, advanced process control, optimization, project management, and customer support.

Ellipsys handles single custom application requests to turnkey project delivery including analysis, planning, design, implementation, installation, training and support and all of the project management tasks that go along with these efforts.

Training

Contact with our customers does not end with a project's completion. Ellipsys offers comprehensive initial and ongoing training to make sure that the software at your site is used to its fullest. Ellipsys offers basic, advanced and customized courses for AspenTech projects either in Houston or at your site. Courses offered cover all AspenTech database, layered, and desktop products. Ellipsys also creates custom training courses, taught on-site, providing a cost-effective means to train your staff.

PRODUCT & APPLICATION EXPERTISE

AspenTech Products

- InfoPlus.21
- Setcim/InfoPlus-X
- SETCON/InfoPlus Batch.21
- SQLplus
- Web.21
- GCS
- Process Explorer
- DMCplus
- Advisor
- MIMI

Systems Programming

- Interfaces
- Windows NT
- Open VMS
- HP-UX

Relational Databases

- LIMS Integration
- Database Design
- Oracle
- SQL Server
- Access

Windows Development

- Visual Basic
- Visual C++
- Office/VBA
- Components
- Access

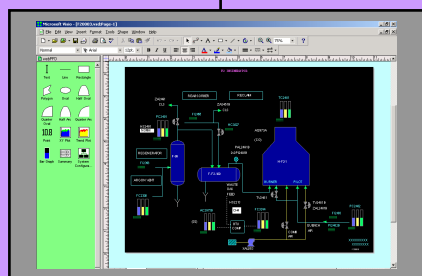
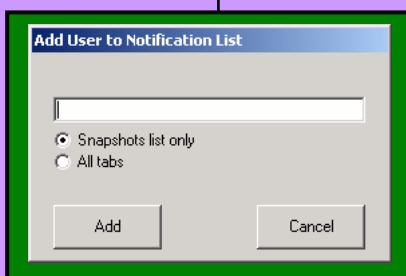
Interfaces

- OPC
- CIM-IO
- Phoenix
- Major DCS/PLC

Internet

- ASP
- VBScript
- JavaScript

In short, Ellipsys has the technical staff to make any project happen with the business acumen and project management skills to make sure that it happens on time and within your budget.



Industry Experience

- Refining
- Petrochemical
- Oil & Gas
- Manufacturing
- Glass
- Textiles

Engineering, Systems & Business Process Experience

- Integration
- Migrations
- Custom Applications
- Batch Management
- SPC
- Production Accounting
- Laboratory Systems
- Control and Optimization
- Blending
- Custom Interfaces
- Supply Chain Management

Ellipsys Products

- Graphics Management
WebPFD for Web.21
GCS to Process Explorer
TDC-3000 to Process Explorer
- System Management
E!Assist
E!Redundancy
- Applications
E!PlantBalance
E!XBC
- LIMS Interfaces
- Excel Add-ins
E!QT
SPC/SQC analysis tools
Real-time data retrieval
- Utilities
Audible event notification
E-mail/pager event notification
OCX controls for InfoPlus.21

Outsourcing

Ellipsys has all of the resources and expertise needed to significantly reduce the cost of ownership related to your real-time process information management systems. Ellipsys offers outsourcing programs from basic remote maintenance & monitoring, to total system, application, and user management. We can provide as much or as little additional help as your company needs to ensure that your plant systems run smoothly from day to day.

System Support

Ellipsys provides a support program that responds to trouble calls and general systems support for your production facilities. Ellipsys also offers products that alert your staff (through e-mail or pager) when the integrity of the system has been affected—with no user interaction. These products also support producing automated system “health” reports.



Ellipsys, Inc.

Mailing Address:
PO Box 2687, Bellaire, TX 77402

Houston Office:
6750 West Loop South, Suite 840
Bellaire, Texas 77401
713-852-9595

e-mail: info@ellipsys.com
web: www.ellipsys.com