

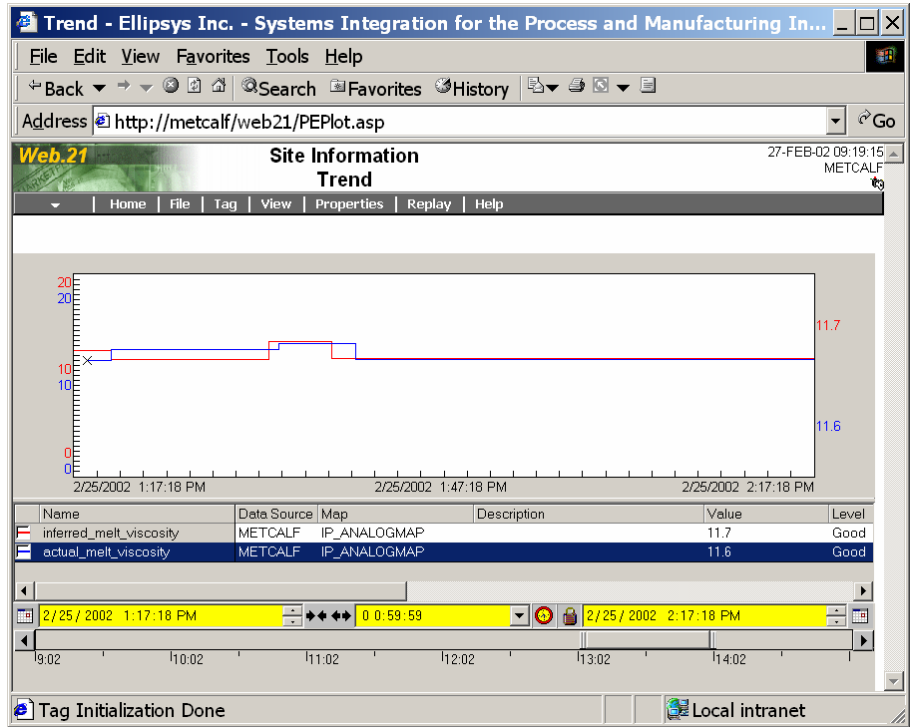
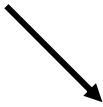
# E!LIMS™

**Flexible, integrated, data-driven LIMS interface**

***Because it's the true integration of your lab and process data that opens the door to improving product quality***



Lab Data



Process Data



Systems Integration  
for the Process and  
Manufacturing Industries

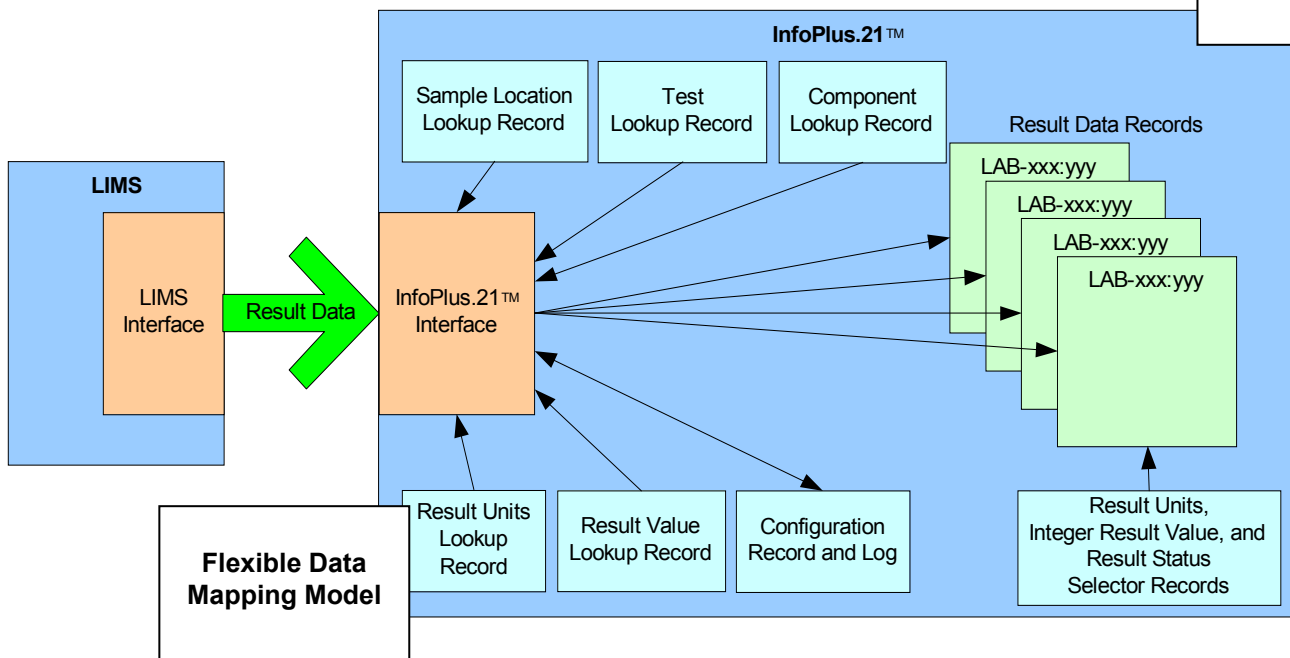
Replacing or upgrading your legacy systems?  
 Still investing in a "custom interface", but need advanced features?

*E!LIMS™ allows you to rapidly integrate your LIMS system, then insures continuous and reliable data transfer!*

The screenshot shows the 'LIMS\_ConfigDef - Administrator' window. The left pane displays a tree view of configuration categories: LIMS\_ConfigDef, LIMS\_LookupDef, LIMS\_LookupValue, LIMS\_MasterSCDef, and LIMS\_SpecialCDef. The right pane shows a list of configuration parameters with their values. A callout box labeled 'Simple, Straightforward Configuration' points to the list.

Name	Value
Ab NAME	LIMSConfig
IS_DIRTY	Clean
DEBUG_MODE	YES
SCHEDULE_TIME	03-JAN-02 14:06:36.0
RESCHEDULE_INTERVAL	+00000:00:03.0
AUTO_ADD_LOCATIONS	YES
IGNORE_LOCATIONS	NO
AUTO_ADD_TESTS	YES
IGNORE_TESTS	NO
AUTO_ADD_COMPONENTS	YES
IGNORE_COMPONENTS	NO
AUTO_ADD_UNITS	YES
IGNORE_UNITS	NO
WRITE_DESCRIPTION	YES
WRITE_UNITS	YES
Ab TAG_PREFIX	-
Ab TAG_SEPARATOR1	-
Ab TAG_SEPARATOR2	-
Ab TAG_SUFFIX	-
AUTO_ADD_TAGS	YES
AUTO_ADD_INTS	YES
AUTO_ADD_REALS	YES
APPEND_TIME_TO_TXT	YES
LIMS_LOCATION	L1

**Customizable Tag Naming**



## E!LIMS™ Key Features

- Allows seamless integration of process/production data with LIMS quality data.
- Simple, straightforward configuration of the interface for a wide variety of LIMS packages.
- Flexible – works well with commercially available and in-house LIMS systems.
- High performance – unlimited throughput.
- Choice of either the LIMS system or the data historian to configure and maintain E!LIMS.
- Supports integer, floating point, and text values.
- Multiple types of data are stored to InfoPlus.21:
  - Sample Time
  - Sample Description
  - Sample Location
  - Test
  - Component
  - Result Value (integer, floating point, text)
  - Result Units
  - Result Status
- Supports corrections and re-tests of samples with data properly inserted into history.
- Supports insertion of non-chronological data.
- Supports multiple LIMS input to a single database, or a single LIMS input to multiple databases.
- Supports automatic creation of data historian records using a customizable tag naming convention.
- LIMS sample location, test, and component names can be filtered and mapped to specific data historian names.

# Flexible

# Reliable

# Proven !



## System Requirements

- InfoPlus.21™ v2.51 or higher, or Setcim™ v4.9 or higher
- SQLplus (including ODBC driver)
- ODBC-compliant LIMS database

*We deliver exceptional value to our clients by  
combining state-of-the-art technology with outstanding people*

#### **SYSTEMS INTEGRATION EXPERTISE**

- Process Information Systems
- Real-time Databases
- Relational Databases
- Applications Development
- User Interfaces / GUI
- Data Flow Optimization

#### **APPLICATIONS EXPERTISE**

- SPC / Six Sigma
- Batch Tracking / Management
- Production Accounting
- Laboratory Systems
- Blending
- Control & Optimization

#### **PROJECT ACTIVITIES**

- Plant I/T Strategic Planning
- Project Management
- Staffing / Execution
- Training
- Technical Support
- Benefits and Risk Audits

#### **INDUSTRY EXPERIENCE**

- Refining
- Petrochemical
- Oil & Gas
- Manufacturing
- Glass
- Textiles

#### **OTHER ELLIPSYS PRODUCTS**

##### **E!Assist™**

- InfoPlus.21™ System Health Monitoring and Alarming

##### **WebPFD™**

- Microsoft Visio-based environment for maintaining process flow diagrams and publishing to Web.21
- GCS, Process Explorer, and TDC3000 to Web.21 Display Conversion

##### **E!PlantBalance**

- Real-time, On-line Material Balance

##### **E!QT**

- InfoPlus.21 Excel Query Tool

##### **E!Redundancy**

- InfoPlus.21 and CIM-IO redundancy



#### **Ellipsys, Inc.**

Mailing Address:  
P.O. Box 2687, Bellaire, TX 77402

Address:  
6750 West Loop South, Suite 840  
Bellaire, TX 77401  
713-852-9595  
fax: 713-667-9010

email: [info@ellipsys.com](mailto:info@ellipsys.com)  
web: <http://www.ellipsys.com>

*Founded in 1995, Ellipsys is a full-service premier  
systems integrator for the complete Aspen  
Technology product-line...*