

E!Loader™

Simple creation of new tags in your InfoPlus.21™ database from any ODBC-compliant source



ODBC-compliant
database such as
Microsoft™
Access with a
database
configuration

Configure Fields

Available Fields

Source Database

ID
name
recdesc
tagtype
unit
unitname
unitnum
areaname
areanum
pv
ih
pl
ph
pv
output

Target Database

IP_AnalogDef

IP_#_OF_TREND_VALUES
NAME
IP_DESCRIPTION
IP_PLANT_AREA
IP_TAG_TYPE
IP_TAG_UNITS
IP_VALUE_FORMAT
IP_INPUT_VALUE
IP_INPUT_QUALITY
IP_INPUT_TIME
IP_DC_SIGNIFICANCE
IP_DC_MAX_TIME_INT
IP_VALUE
IP_VALUE_QUALITY
IP_DC_STATUS
IP_DC_SLOPE

Get Field Names

Associate Fields

Assign Constant

Field Assignments

MDB Field	InfoPlus.21 Field	Pass	Constant
name	NAME	Insert	
recdesc	IP_DESCRIPTION	Insert	

Delete Assignment

Insert/Update

Change Constant

Finished



InfoPlus.21™
Data Historian

E!Loader™
ODBC to InfoPlus.21™ Bridge



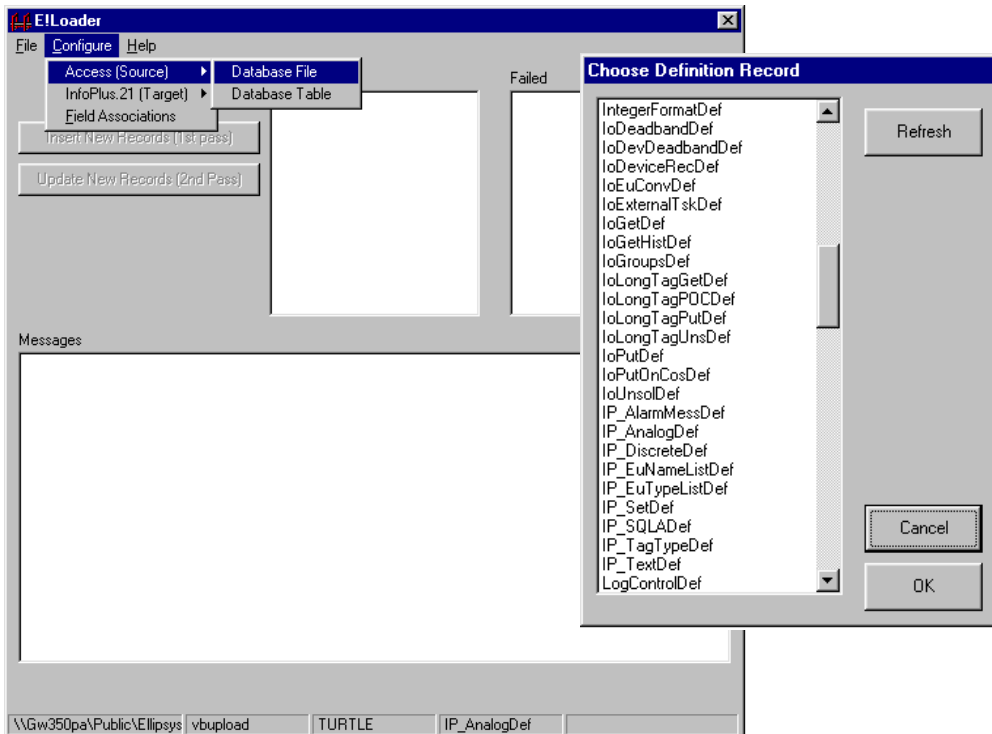
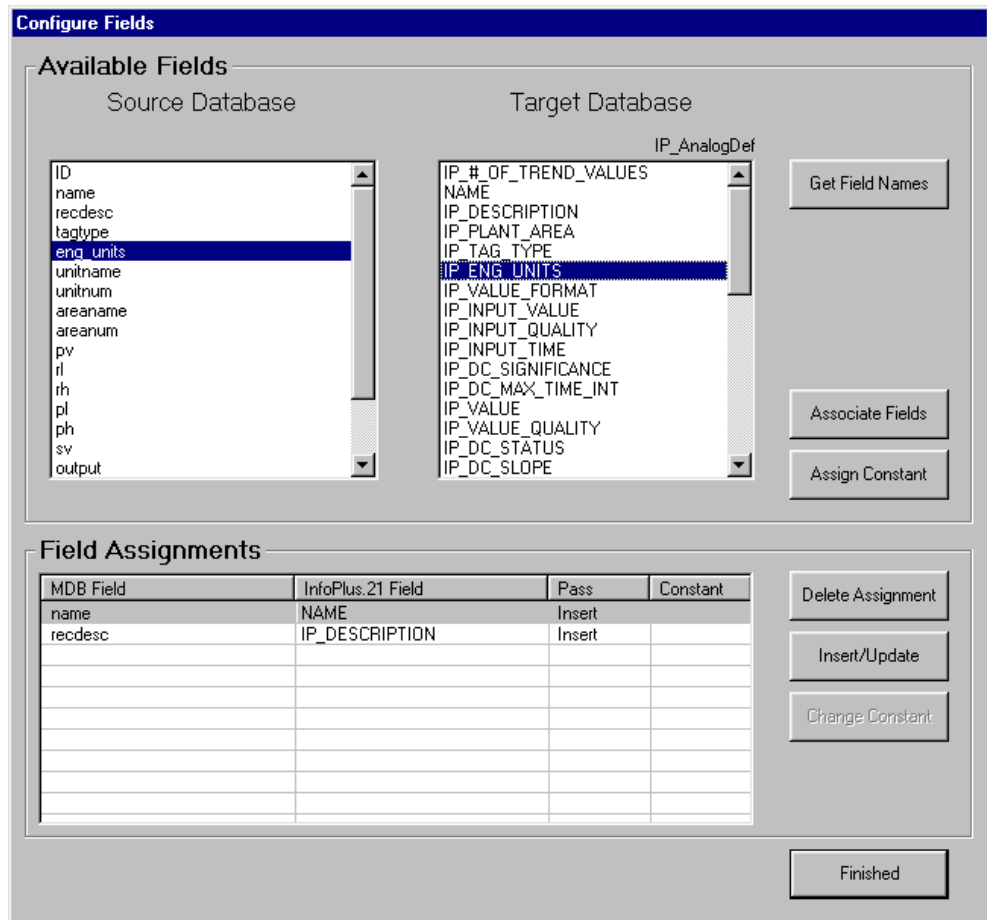
Systems Integration
for the Process and
Manufacturing Industries

“E!Loader™ allows you to rapidly design and implement your InfoPlus.21™ data historian with no query-writing expertise.”

E!Loader™ allows novice users to create and update InfoPlus.21 tags in bulk

With a friendly graphical-user-interface, E!Loader enables users unfamiliar with the SQL language to add new tags and configure them in batches.

All of this can be accomplished from a basic ODBC data source file, such as Microsoft™ Access or Excel, or even another AspenTech database.



A Windows based GUI enables users to easily make complex additions and changes to their InfoPlus.21 database.

Users can insert and update any definition record in the InfoPlus.21 database such as IP_AnalogDef, IP_DiscreteDef, or your own custom records.

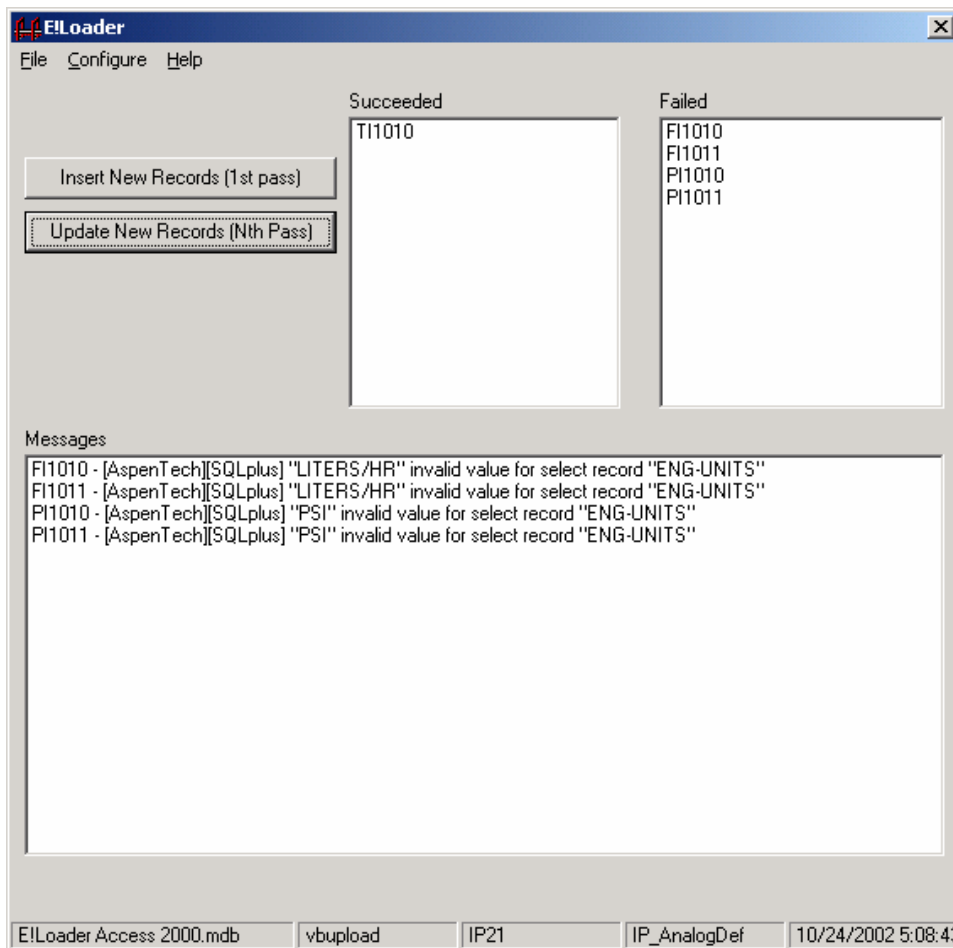
E!Loader™ MAIN FEATURES

- **Creation and updating of tags in InfoPlus.21 from an ODBC-compliant data source**
- **Customizable field associations allow user to easily configure new tags**
- **Easy to use Windows based GUI requires no prior knowledge of SQL**
- **Ability to generate logs to document the changes you have made to your database**
- **Powerful SQL commands work behind-the-scenes to build and update tags efficiently**



System Requirements

- *InfoPlus.21™ v2.51 or higher*
- *SQLplus (including ODBC driver)*
- *ODBC-compliant database with drivers, Microsoft Access recommended*



Employing E!Loader™ allows your plant to quickly and efficiently add and configure new tags in your database. Customizable logging capabilities enable you to easily track the changes you have made.

*We deliver exceptional value to our clients by
combining state-of-the-art technology with outstanding people*

SYSTEMS INTEGRATION EXPERTISE

- Process Information Systems
- Real-time Databases
- Relational Databases
- Applications Development
- User Interfaces / GUI
- Data Flow Optimization

APPLICATIONS EXPERTISE

- SPC / Six Sigma
- Batch Tracking / Management
- Production Accounting
- Laboratory Systems
- Blending
- Control & Optimization

PROJECT ACTIVITIES

- Plant I/T Strategic Planning
- Project Management
- Staffing / Execution
- Training
- Technical Support
- Benefits and Risk Audits

INDUSTRY EXPERIENCE

- Refining
- Petrochemical
- Oil & Gas
- Manufacturing
- Glass
- Textiles

OTHER ELLIPSYS PRODUCTS

E!Assist™

- InfoPlus.21™ System Health Monitoring and Alarming

WebPFD™

- Microsoft Visio-based environment for maintaining process flow diagrams and publishing to Web.21
- GCS, Process Explorer, and TDC3000 to Web.21 Display Conversion

E!PlantBalance

- Real-time, On-line Material Balance

E!QT

- InfoPlus.21 Excel Query Tool

E!LIMS

- Automated data retrieval from LIMS or other external data stores

E!Redundancy

- InfoPlus.21 and CIM-IO redundancy



Ellipsys, Inc.

Mailing Address:
P.O. Box 2687, Bellaire, TX 77402

Address:
6750 West Loop South, Suite 840
Bellaire, TX 77401
713-852-9595
fax: 713-667-9010

email: info@ellipsys.com
web: <http://www.ellipsys.com>

*Founded in 1995, Ellipsys is a full-service premier
systems integrator for the complete Aspen
Technology product-line...*